

## SPEC SHEET + MEASUREMENTS

### Product photo



## Nike Tech Basic Dri-FIT Polo. 203690

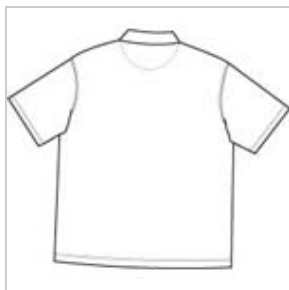
Enjoy unparalleled performance thanks to Dri-FIT moisture management technology.

- 5.3-ounce, 100% polyester Dri-FIT fabric
- Flat knit collar
- Three-button placket
- Pearlized buttons are selected to complement the shirt color
- Open hem sleeves
- Contrast embroidered Swoosh logo on left sleeve

### Sketches



front



back

### CARE INSTRUCTIONS

Machine wash cold, inside out, with like colors. Do not use softeners. Do not bleach, iron or dry clean. Tumble dry low.

# Product Measurements

	XS	S	M	L	XL	2XL	3XL	4XL
<b>Body Length at Back</b>	27 1/2	28 1/2	29 1/2	30 1/2	32	33 1/2	35	36 1/2
<b>Chest</b>	19 1/2	21	22 1/2	24	25 1/2	27	28 1/2	30
<b>Sleeve Length</b>	18 3/4	19 1/2	20 1/4	21	21 1/2	22	22 1/2	23

**Body Length at Back:** Measured from high point shoulder to finished hem at back.

**Chest:** Measured across the chest one inch below armhole when laid flat.

**Sleeve Length:** Start at center of neck and measure down shoulder, down sleeve to hem.

## Size Chart

	XS	S	M	L	XL	2XL	3XL	4XL
<b>Chest</b>	32-35	35 - 37 1/2	37 1/2 - 41	41 - 44	44 - 48 1/2	48 1/2 - 53 1/2	53 1/2 - 58	58 - 63

## How To Measure

## Chest



Measure under the arm and around the fullest part of the chest with arms down, keeping tape horizontal.