

SPEC SHEET + MEASUREMENTS

Product photo



Nike Women's Tech Basic Dri-FIT Polo. 203697

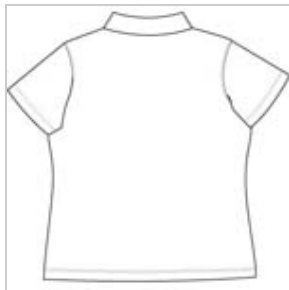
Enjoy unparalleled performance thanks to Dri-FIT moisture management technology.

- 5.3-ounce, 100% polyester Dri-FIT fabric
- Tailored for a feminine fit
- Flat knit collar
- Four-button placket
- Pearlized buttons are selected to complement the shirt color
- Open hem sleeves
- Contrast embroidered Swoosh logo on left sleeve

Sketches



front



back

CARE INSTRUCTIONS

Machine wash cold, inside out, with like colors. Do not use softeners. Do not bleach, iron or dry clean. Tumble dry low.

Product Measurements

	S	M	L	XL	2XL
Body Length at Back	23	24	25	26	27
Bust	19	20	21 1/4	22 1/2	23 3/4
Sleeve Length	14 1/8	14 3/4	15 3/8	16	16 5/8

Body Length at Back: Measured from high point shoulder to finished hem at back.

Bust: Measured across the chest one inch below armhole when laid flat.

Sleeve Length: Start at center of neck and measure down shoulder, down sleeve to hem.

Size Chart

	S	M	L	XL	2XL
Bust	32 1/2 - 35 1/2	35 1/2 - 38	38 - 41	41 - 44 1/2	44 1/2 - 48 1/2
Size	4/6	8/10	12/14	16/18	20

How To Measure

Bust

Measure under the arm and around the fullest part of the bust with arms down, keeping tape horizontal.

