

## SPEC SHEET + MEASUREMENTS

### Product photo



# Nike Therma-FIT Pullover Fleece Hoodie. CN9473

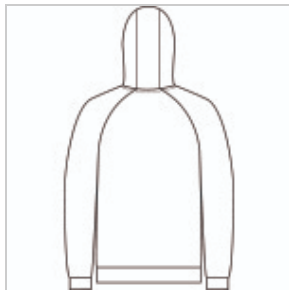
Nike has elevated the classic hoodie by improving this year-round essential with incredibly warm Therma-FIT fabric which breathes and manages moisture.

- 7.4-ounce, 100% polyester Therma-FIT fabric
- Three-panel hood
- Front pouch pocket
- Open cuffs
- Contrast heat transfer Swoosh logo on right chest

### Sketches



front



back

### CARE INSTRUCTIONS

Machine Wash Cold (30C). Wash Inside Out. Wash with Like Colors. Do Not Use Softeners. Do Not Use Bleach. Tumble Dry Low. Do Not Iron. Do Not Dry Clean.

# Product Measurements

	S	M	L	XL	2XL	3XL	4XL
<b>Body Length at Back</b>	28 1/2	28 7/8	29 5/8	30 3/8	31 1/4	32	32 3/4
<b>Chest</b>	21 1/8	22 5/8	24 1/4	25 3/4	28 1/8	30 1/8	32 1/8
<b>Sleeve Length from Center Back</b>	35 1/2	36	36 1/2	37 1/4	38	38 5/8	39 3/8

**Body Length at Back:** Measured from high point shoulder to finished hem at back.

**Chest:** Measured across the chest one inch below armhole when laid flat.

**Sleeve Length from Center Back:** Measure from Center Back neck to shoulder point to sleeve hem.

## Size Chart

	XS	S	M	L	XL	2XL	3XL	4XL
<b>Chest</b>	32-35	35-37 1/2	37 1/2-41	41-44	44-48 1/2	48 1/2 -53 1/2	53 1/2 - 58	58-63

## How To Measure

## Chest



Measure under the arm and around the fullest part of the chest with arms down, keeping tape horizontal.