

SPEC SHEET + MEASUREMENTS

Product photo



New Era[®] Women's Comeback Fleece Pullover Hoodie. LNEA550

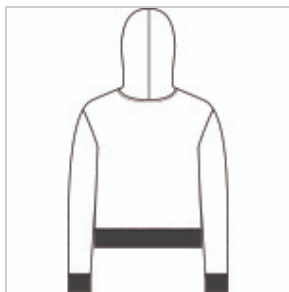
Stand out in the stands or wherever you go in this soft, midweight hoodie that mixes classic styling and fit with New Era attitude.

- 8-ounce, 55/45 ring spun cotton/polyester
- 2-panel hood
- Coverstitching at hood, cuffs and hem
- Slight drop shoulders
- Front pouch pocket
- Embroidered New Era flag at left pocket
- Hits at high hip
- Rib knit cuffs and hem

Sketches



front



back

CARE INSTRUCTIONS

Machine Wash Cold. Tumble Dry Low. Warm Iron As Needed. Do Not Iron On Print.

Product Measurements

	XS	S	M	L	XL	2XL	3XL	4XL
Body Length at Back	21 1/2	22	22 1/2	23	23 1/2	24	24 1/2	25
Bust	20	21	22	23 1/2	25	26 1/2	28 1/2	30 1/2
Size	2	4/6	8/10	12/14	16/18	20/22	24/26	28/30
Sleeve Length from Center Back	32	32 1/2	33	33 5/8	34 1/4	34 7/8	35 1/4	35 5/8

Body Length at Back: Measured from high point shoulder to finished hem at back.

Bust: Measured across the chest one inch below armhole when laid flat.

Sleeve Length from Center Back: Measure from Center Back neck to shoulder point to sleeve hem.

Size Chart

	XS	S	M	L	XL	2XL	3XL	4XL
Bust	32-34	35-36	37-38	39-41	42-44	45-47	48-51	52-55
Size	2	4/6	8/10	12/14	16/18	20/22	24/26	28/30

How To Measure

Bust

Measure under the arm and around the fullest part of the bust with arms down, keeping tape horizontal.

