

SPEC SHEET + MEASUREMENTS

Product photo

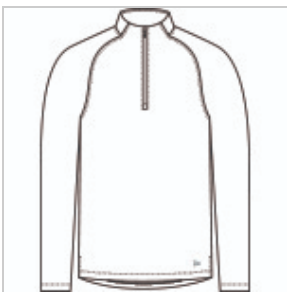


New Era[®] Stand Out 1/4-Zip. NEA515

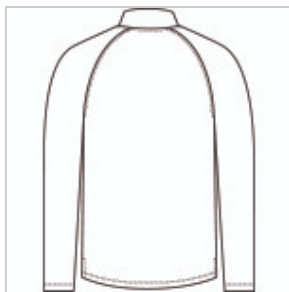
Whether you're cheering from the stands or heading to the office, elevate your look with this 1/4-zip constructed from 100% recycled material.

- 5.7-ounce, 100% recycled polyester
- This product's carbon footprint has been measured and reduced through a combination of preferred materials and investing in carbon offset projects through the ClimeCo Certified Product™ Program
- New Era logo zipper pull
- Drop hem
- Embroidered New Era logo at hem

Sketches



front



back

A C-FREE[®] Product

We start by reducing the product's impact by switching to at least 50% preferred materials. We then measure and reduce the total carbon footprint of each product in the C-FREE program—from cradle-to-grave—through the ClimeCo Certified Product™ Program. This

certification purchases third-party, verified carbon offsets through ClimeCo.

Care Instructions

Machine Wash Cold With Like Colors. Do Not Use Fabric Softener. Only Non-Chlorine Bleach, When Needed. Tumble Dry Low. Remove Promptly. Cool Iron, If Necessary.

Product Measurements

	XS	S	M	L	XL	2XL	3XL	4XL
Body Length at Back	27 1/2	28 1/2	29 1/2	30 1/2	31 1/2	32 1/2	33 1/4	34
Chest	18 1/2	20	21 1/2	23	25	27	29 1/2	32 1/2
Raglans and Dolmans Sleeve Length	33 1/4	34	34 3/4	35 1/2	36 1/4	37	37 3/4	38 1/2

Body Length at Back: Measured from high point shoulder to finished hem at back.

Chest: Measured across the chest one inch below armhole when laid flat.

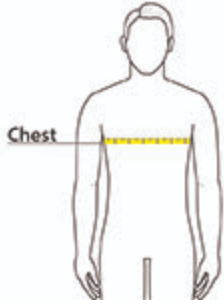
Raglans and Dolmans Sleeve Length: Measure from neck edge to finished hem.

Size Chart

	XS	S	M	L	XL	2XL	3XL	4XL
Chest	32-34	35-37	38-40	41-43	44-47	48-51	52-56	57-61

How To Measure

Chest



Measure under the arm and around the fullest part of the chest with arms down, keeping tape horizontal.