

SPEC SHEET + MEASUREMENTS

Product photo

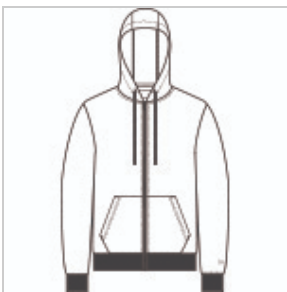


New Era[®] Heritage Fleece Full-Zip Hoodie. NEA526

One of the softest, loftiest fleece you've ever felt. This relaxed look plays right into a vintage 90s vibe with slight drop shoulders and soft colors.

- 8.7-ounce, 78/22 combed cotton/polyester
- Debossed New Era neck tape
- 3-panel hood with dyed-to-match braided drawcords
- Antique nickel metal zipper
- Front pockets
- Rib knit cuffs and hem
- Embroidered New Era flag at left sleeve

Sketches



front



back

CARE INSTRUCTIONS

Machine Wash Cold With Like Colors. Do Not Use Fabric Softener. Do Not Bleach. Tumble Dry Low. Remove Promptly. Cool Iron If Necessary.

Product Measurements

	XS	S	M	L	XL	2XL	3XL	4XL
Body Length at Back	26	27	28	29	30	31	31 3/4	32 1/2
Chest	19 1/2	21	22 1/2	24	26	28	30 1/2	33 1/2
Sleeve Length from Center Back	34 1/4	35	35 3/4	36 1/2	37 1/4	38	38 3/4	39 1/2

Body Length at Back: Measured from high point shoulder to finished hem at back.

Chest: Measured across the chest one inch below armhole when laid flat.

Sleeve Length from Center Back: Measure from Center Back neck to shoulder point to sleeve hem.

Size Chart

	XS	S	M	L	XL	2XL	3XL	4XL
Chest	33-35	35-38	38-41	43-44	45-48	48-52	53 1/2-56	59- 61 1/2

How To Measure

Chest



Measure under the arm and around the fullest part of the chest with arms down, keeping tape horizontal.