

SPEC SHEET + MEASUREMENTS

Product photo



New Era[®] STS 1/4-Zip Hoodie. NEA541

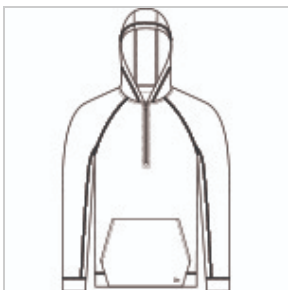
A modern twist on heritage style, this hoodie is a perfect layering piece with its smooth face, jacquard interior and pique-like texture.

- 7.8-ounce, 56/44 cotton/poly double knit jacquard
- Heat transfer label for tag-free comfort
- Metaluxe[®] zipper
- Patch pocket
- Embroidered New Era flag logo on pocket

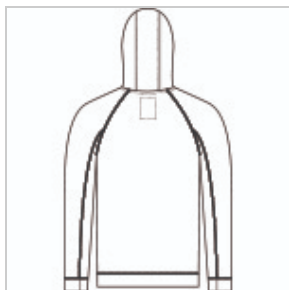
CARE INSTRUCTIONS

Machine Wash Cold With Like Colors. Do Not Use Fabric Softener. Do Not Bleach. Tumble Dry Low. Remove Promptly. Cool Iron If Necessary.

Sketches



front



back

Product Measurements

	XS	S	M	L	XL	2XL	3XL	4XL
Body Length at Back	27	28	29	30	31	32	32 3/4	33 1/2
Chest	18 1/4	19 3/4	21 1/4	22 3/4	24 3/4	26 3/4	29 1/4	32 1/4
Raglans and Dolmans Sleeve Length	33 3/4	34 1/2	35 1/4	36	36 3/4	37 1/2	38 1/4	39

Body Length at Back: Measured from high point shoulder to finished hem at back.

Chest: Measured across the chest one inch below armhole when laid flat.

Raglans and Dolmans Sleeve Length: Measure from neck edge to finished hem.

Size Chart

	XS	S	M	L	XL	2XL	3XL	4XL
Chest	32-34	35-37	38-40	41-43	44-47	48-51	52-56	57-61

How To Measure

Chest



Measure under the arm and around the fullest part of the chest with arms down, keeping tape horizontal.