

SPEC SHEET + MEASUREMENTS

Product photo



Nike Therma-FIT Pocket 1/4-Zip Fleece Hoodie. NKFD9742

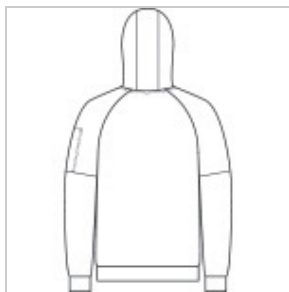
This 1/4-zip hoodie with a zippered left arm pocket brings the heat to your workout with Therma-FIT fabric. Therma-FIT helps manage your body's natural heat to keep warm in cold-weather conditions.

- 7.4-ounce polyester Therma-FIT fabric with at least 50% recycled content
- Three-panel hood
- Black drawcords
- Dyed-to-match zipper
- Zippered left arm pocket
- Front pouch pocket
- Self-fabric cuffs and hem
- Contrast embroidered Swoosh logo on left sleeve
- Contrast embroidered Therma-FIT logo on back hem

Sketches



front



back

CARE INSTRUCTIONS

Machine Wash Cold. Wash Inside Out. Wash

With Like Colors. Do Not Use Softeners. Do Not Use Bleach. Tumble Dry Low. Do Not Iron. Do Not Dry Clean.

Product Measurements

	XS	S	M	L	XL	2XL	3XL	4XL
Body Length at Back	26 3/8	26 3/4	27 1/8	27 7/8	28 3/4	29 1/2	30 1/4	31 1/8
Chest	20	21 5/8	23 1/8	24 3/4	26 3/4	28 5/8	30 5/8	32 5/8
Raglans and Dolmans Sleeve Length	31 3/8	31 3/4	32 1/4	32 5/8	33 1/8	33 3/4	34 1/4	34 7/8

Body Length at Back: Measured from high point shoulder to finished hem at back.

Chest: Measured across the chest one inch below armhole when laid flat.

Raglans and Dolmans Sleeve Length: Measure from neck edge to finished hem.

Size Chart

	XS	S	M	L	XL	2XL	3XL	4XL
Chest	32-35	35-37 1/2	37 1/2-41	41-44	44-48 1/2	48 1/2 -53 1/2	53 1/2 - 58	58-63

How To Measure

Chest



Measure under the arm and around the fullest part of the chest with arms down, keeping tape horizontal.