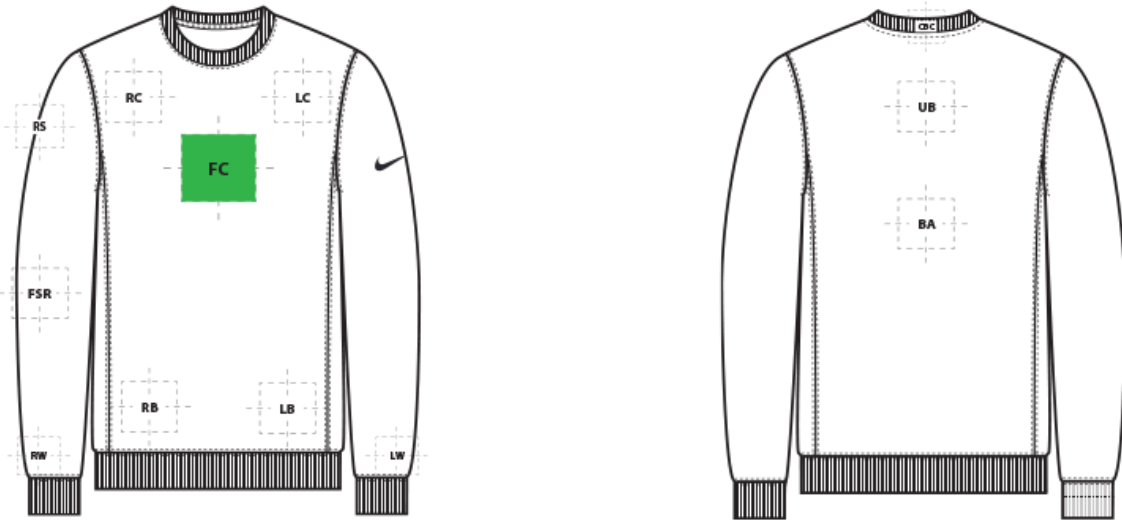


# DECORATION SPEC SHEET



## NKFD9863 Nike Club Fleece Sleeve Swoosh Crew



### FRONT DECORATION DIMENSIONS

FRONT DECORATION DIMENSIONS			
<b>FC</b>	Full Chest	10" H x 10" W	Primary
<b>LB</b>	Left Bottom	4"Hx4"W	
<b>LC</b>	Left Chest	4"H x 4"W	
<b>RB</b>	Right Bottom	4"Hx4"W	
<b>RC</b>	Right Chest	4"H x 4"W	

### BACK DECORATION DIMENSIONS

BACK DECORATION DIMENSIONS			
<b>BA</b>	Back	12"H x 12"W	
<b>CBC</b>	Collar Back Center	1"H x 4"W	
<b>UB</b>	Upper Back	4"H x 10"W	

### SLEEVE DECORATION DIMENSIONS

SLEEVE DECORATION DIMENSIONS			
<b>FSR</b>	Full Sleeve Right	4"H x 16"W	
<b>LW</b>	Left Wrist	4"H x 4"W	
<b>RS</b>	Right Shoulder	4"H x 4"W	
<b>RW</b>	Right Wrist	4"H x 4"W	

Decoration area is dependent on garment size, decoration method and the equipment being used. Please consult your decorator or supplier.

# DECORATION SPEC SHEET



NKFD9863 Nike Club Fleece Sleeve Swoosh Crew

## DECORATION TECHNIQUES

---



EMBROIDERY



SCREEN PRINTING



HEAT TRANSFERS



UV PRINTING

## ESSENTIAL PRODUCT INFORMATION

---

Due to the nature of cotton/polyester blends, special care must be taken throughout the decoration process when heat is applied for curing. Please consult with your decorator or material supplier.

## TIPS FROM OUR EXPERTS BY DECORATION TECHNIQUE

---



### EMBROIDERY

Embroidery is the art of embellishing a piece of apparel with a needle and thread or yarn creating stunning visual representations of various types of art. This is achieved by converting logos in a digitizing software and using various stitch patterns, angles, density and stitch types to create depth, movement and detail. Thread can be made from many materials. The most commonly used threads are polyester and rayon. There are also options such as metallic, cotton, nylon, silk and even Nomex thread for fire resistance. Embroidery has a very high-perceived value and is popular for use on most apparel, bags, hats, luggage, blankets and more!



### SCREEN PRINTING

An imprinting method in which the image is transferred to the fabric. Ink is squeegeed through a stenciled screen stretched over a frame and then cured in a dryer.

# DECORATION SPEC SHEET



## NKFD9863 Nike Club Fleece Sleeve Swoosh Crew



### HEAT TRANSFERS

A graphic, name and or number applied to a textile with a heat press. Great for quantities of any size, sports name and numbering, fashion, performance wear, print on demand programs and on-site decorating events.

**Low Cure ink, Bleed Blockers needed, \*Please consult with your decorator, equipment, and consumable supplier.\***



### UV PRINTING

A method of ink jet printing direct to a garment or hard good. You use specialized inks that cure after printing with a UV light that follows the print head. There are both Direct to Garment and Direct to Substrate style machines.

**It is a best practice to consult with your decorator or consumable supplier(s) for accessories, specialty frames and applications that are specific to a shop's setup and equipment.**