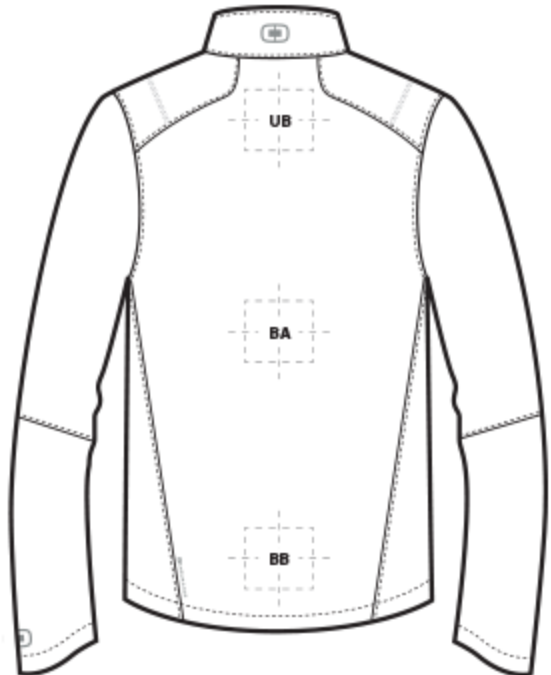
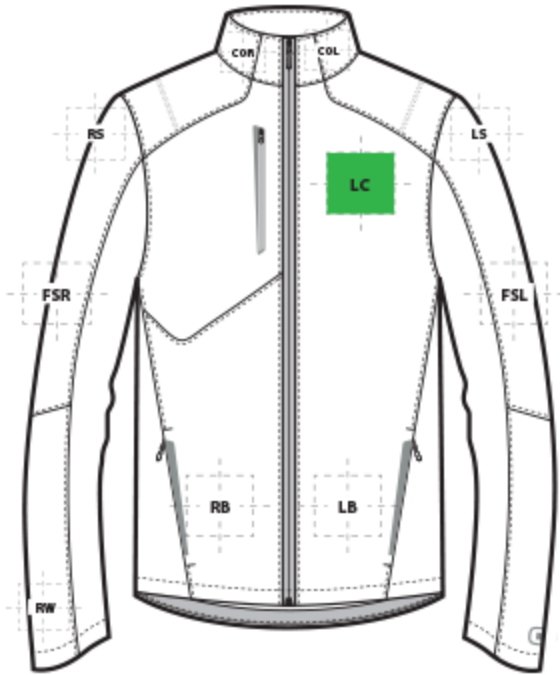


# DECORATION SPEC SHEET



OE720 OGIO® Crux Soft Shell



## FRONT DECORATION DIMENSIONS

COL	Collar Left	1"H x 2"W	
COR	Collar Right	1"H x 2"W	
LB	Left Bottom	4"H x 4"W	
LC	Left Chest	4"Hx4"W	Primary
RB	Right Bottom	4"H x 4"W	

## BACK DECORATION DIMENSIONS

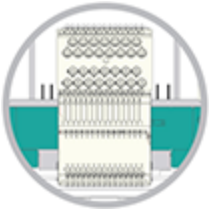
BA	Back	20"H x 10"W	
BB	Back Bottom	12"H x 10"W	
UB	Upper Back	4"H x 4"W	

SLEEVE DECORATION DIMENSIONS			
<b>FSL</b>	Full Sleeve Left	4"H x 21"W	
<b>FSR</b>	Full Sleeve Right	4"H x 21"W	
<b>LS</b>	Left Shoulder	4"H x 4"W	
<b>RS</b>	Right Shoulder	4"H x 4"W	
<b>RW</b>	Right Wrist	3"H x 3"W	

Decoration area is dependent on garment size, decoration method and the equipment being used. Please consult your decorator or supplier.

**DECORATION TECHNIQUES** [Click the icon for details](#)

---



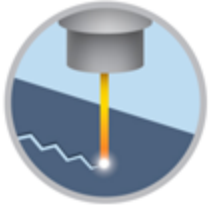
**EMBROIDERY**



**SCREEN PRINTING**



**EMBOSS**



**LASER ETCHING**

**ESSENTIAL PRODUCT INFORMATION**

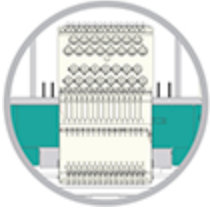
---

Due to the nature of 100% polyester fabrics, special care must be taken throughout the decoration process when heat is applied for curing. Please consult with your decorator or material supplier.

Due to the nature of water resistant coatings, special care must be taken throughout the decoration process. An ink catalyst additive or special adhesive heat transfer is required. Please consult with your decorator or material supplier.

**TIPS FROM OUR EXPERTS BY DECORATION TECHNIQUE**

---



### **EMBROIDERY**

Embroidery is the art of embellishing a piece of apparel with a needle and thread or yarn creating stunning visual representations of various types of art. This is achieved by converting logos in a digitizing software and using various stitch patterns, angles, density and stitch types to create depth, movement and detail. Thread can be made from many materials. The most commonly used threads are polyester and rayon. There are also options such as metallic, cotton, nylon, silk and even Nomex thread for fire resistance. Embroidery has a very high-perceived value and is popular for use on most apparel, bags, hats, luggage, blankets and more!

**In order to maintain waterproof integrity, please consult with your decorator, equipment, and consumable supplier for best practices. •Water Proof/Coated Fabric with bonded barrier- 65/9 or 70/10 coated Sharp Point**



### **SCREEN PRINTING**

An imprinting method in which the image is transferred to the fabric. Ink is squeegeed through a stenciled screen stretched over a frame and then cured in a dryer.

**Low-cure poly inks are required. Grey or black bleed blockers may be necessary. Bonding catalysts may be required for stain release, water resistant/waterproof coated and nylon fabrics.**



### **EMBOSS**

Embossing uses a metal-engraved die along with a combination of time and temperature to create a design that will not fade or wash away. An embossed logo is made when the areas surrounding the logo are pressed, creating a puffed or raised look. This method works well on cotton, polyester, leather, pleather, fleece and polar fleece fabrics. It is an extremely upscale look and a fresh alternative to traditional decorating techniques.

**\*Darker colors and lighter weight garments may not give you the desired outcome.\* \*Please consult with your decorator, equipment, and consumable supplier.\***



### **LASER ETCHING**

Laser etching is a decorating process that burns a pattern into the top layer of fabric, giving it a subtle tone-on-tone appearance. The image the etching creates has an upscale look that is usually the same color but several shades darker than the original fabric's color. It works well with both big or small logos.

**\*Test etch prior to production to dial in wattage and speed. Darker colors may not give you the desired outcome.\* \*Please consult with your decorator, equipment, and consumable supplier.\***

**It is a best practice to consult with your decorator or consumable supplier(s) for accessories, specialty frames and applications that are specific to a shop's setup and equipment.**