

# SPEC SHEET + MEASUREMENTS

## Product photo



## OGIO<sup>®</sup> Women's Stealth Full-Zip Jacket. LOE728

STAY-COOL WICKING

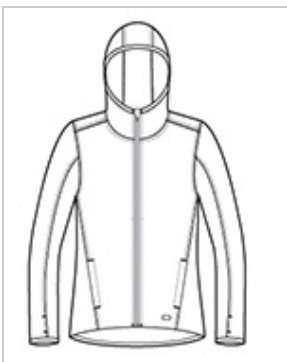
STRETCH

REFLECTIVE DETAILS

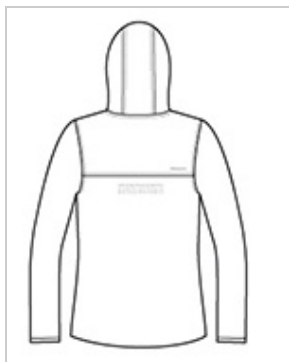
BREATHABLE

- 8.6-ounce, 95/5 poly/spandex with stay-cool wicking technology
- OGIO heat transfer label for tag-free comfort
- OGIO embossed neck taping
- Black binding around hood and cuffs
- Black reverse-coil locking zipper with chin guard
- Ventilating perforation on center back
- Reflective O on back right shoulder
- Front pockets with mesh lining
- Thumbholes
- Curved back hem
- Reflective O on front left hip

## Sketches



front



back

## CARE INSTRUCTIONS

Machine wash color. Only non-chlorine bleach when needed. Tumble dry low. Cool iron, if necessary.

## Product Measurements

	XS	S	M	L	XL	2XL	3XL	4XL
<b>Body Length at Back</b>	27	27 1/2	28	28 1/2	29	29 1/2	30	30 1/2
<b>Bust</b>	17 3/4	18 3/4	19 3/4	21 1/4	22 3/4	24 1/4	26 1/4	28 1/4
<b>Size</b>	2	4/6	8/10	12/14	16/18	20/22	24/26	28/30
<b>Sleeve Length</b>	33	33 1/2	34	34 5/8	35 1/4	35 7/8	36 1/4	36 5/8

**Body Length at Back:** Measured from high point shoulder to finished hem at back.

**Bust:** Measured across the chest one inch below armhole when laid flat.

**Sleeve Length:** Start at center of neck and measure down shoulder, down sleeve to hem.

## Size Chart

	XS	S	M	L	XL	2XL	3XL	4XL
<b>Bust</b>	32-34	35-36	37-38	39-41	42-44	45-47	48-51	52-55
<b>Size</b>	2	4/6	8/10	12/14	16/18	20/22	24/26	28/30

## How To Measure

## Bust

Measure under the arm and around the fullest part of the bust with arms down, keeping tape horizontal.

